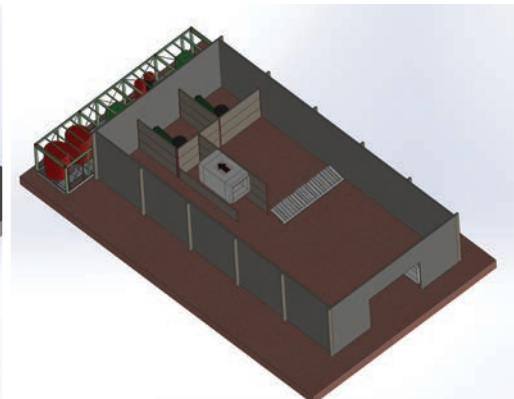
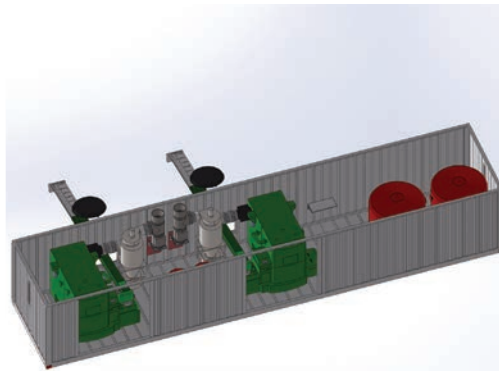
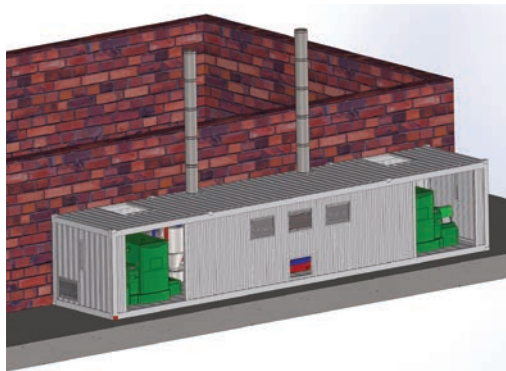
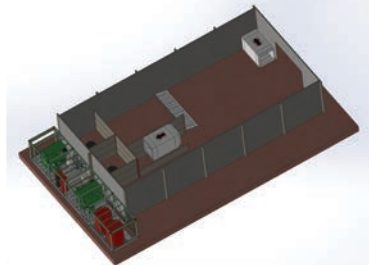
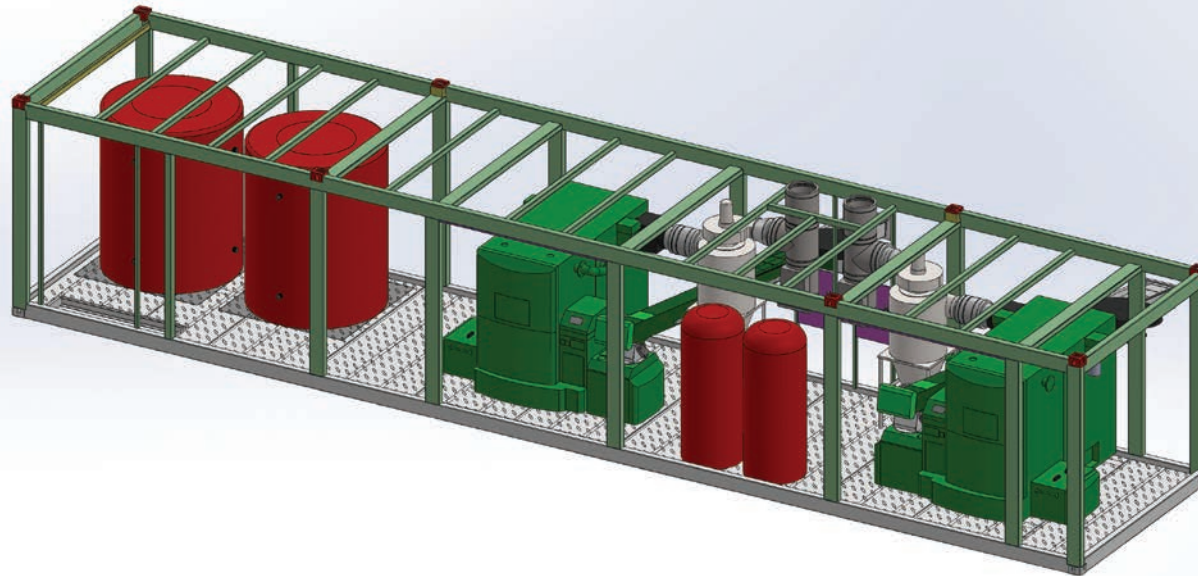
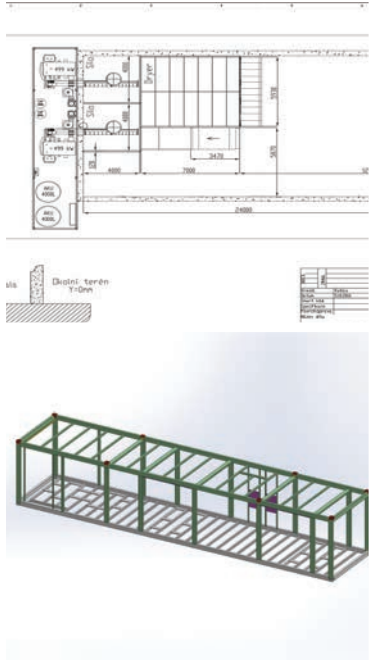




SPECIAL CONTAINERISED 2X 500KW BOILER ROOM, DIMENSIONS 3,2 X 3 X 15,5 M, WOODCHIP FUEL SILO LOCATED INSIDE THE ADJACENT DRYER SHED, 300 KW WOODCHIP DRYING FLOOR WITH HYDRAULIC LOADING RAMP, 200KW DRYING CONTAINER, 6 HEATING CIRCUITS; WOODCHIP/GRAIN DRYER, DRYING CONTAINER, WORKSHOP, FARMHOUSE, HOUSE AND COTTAGE, COMPLETE WITH AUTOMATIC CONTROLS AND REMOTE WEB/ICLOUD MONITORING, LOCATED, GLENFARG, PERTH, SCOTLAND





SMART HEATING TECHNOLOGY

SMART HEATING TECHNOLOGY SMART REFERENCE LIST | SMART MAGNUM CABIN 2 X 500 KW WITH SMART WOODCHIP/GRAIN DRYER

SPECIAL CONTAINERISED 2X 500KW BOILER ROOM, DIMENSIONS 3,2 X 3 X 15,5 M, WOODCHIP FUEL SILO LOCATED INSIDE THE ADJACENT DRYER SHED, 300 KW WOODCHIP DRYING FLOOR WITH HYDRAULIC LOADING RAMP, 200KW DRYING CONTAINER, 6 HEATING CIRCUITS; WOODCHIP/GRAIN DRYER, DRYING CONTAINER, WORKSHOP, FARMHOUSE, HOUSE AND COTTAGE, COMPLETE WITH AUTOMATIC CONTROLS AND REMOTE WEB/ICLOUD MONITORING, LOCATED, GLENFARG, PERTH, SCOTLAND





SMART HEATING TECHNOLOGY

SMART REFERENCE LIST | SMART MAGNUM CABIN 2 X 500 KW WITH SMART WOODCHIP/GRAIN DRYER

SMART HEATING TECHNOLOGY

SPECIAL CONTAINERISED 2X 500KW BOILER ROOM, DIMENSIONS 3,2 X 3 X 15,5 M, WOODCHIP FUEL SILO LOCATED INSIDE THE ADJACENT DRYER SHED, 300 KW WOODCHIP DRYING FLOOR WITH HYDRAULIC LOADING RAMP, 200KW DRYING CONTAINER, 6 HEATING CIRCUITS; WOODCHIP/GRAIN DRYER, DRYING CONTAINER, WORKSHOP, FARMHOUSE, HOUSE AND COTTAGE, COMPLETE WITH AUTOMATIC CONTROLS AND REMOTE WEB/ICLOUD MONITORING, LOCATED, GLENFARG, PERTH, SCOTLAND





SMART HEATING TECHNOLOGY

SMART HEATING TECHNOLOGY SMART REFERENCE LIST | SMART MAGNUM CABIN 2 X 500 KW WITH SMART WOODCHIP/GRAIN DRYER

SPECIAL CONTAINERISED 2X 500KW BOILER ROOM, DIMENSIONS 3,2 X 3 X 15,5 M, WOODCHIP FUEL SILO LOCATED INSIDE THE ADJACENT DRYER SHED, 300 KW WOODCHIP DRYING FLOOR WITH HYDRAULIC LOADING RAMP, 200KW DRYING CONTAINER, 6 HEATING CIRCUITS; WOODCHIP/GRAIN DRYER, DRYING CONTAINER, WORKSHOP, FARMHOUSE, HOUSE AND COTTAGE, COMPLETE WITH AUTOMATIC CONTROLS AND REMOTE WEB/ICLOUD MONITORING, LOCATED, GLENFARG, PERTH, SCOTLAND





SMART HEATING TECHNOLOGY

SMART REFERENCE LIST | SMART MAGNUM CABIN 2 X 500 KW WITH SMART WOODCHIP/GRAIN DRYER

SPECIAL CONTAINERISED 2X 500KW BOILER ROOM, DIMENSIONS 3,2 X 3 X 15,5 M, WOODCHIP FUEL SILO LOCATED INSIDE THE ADJACENT DRYER SHED, 300 KW WOODCHIP DRYING FLOOR WITH HYDRAULIC LOADING RAMP, 200KW DRYING CONTAINER, 6 HEATING CIRCUITS; WOODCHIP/GRAIN DRYER, DRYING CONTAINER, WORKSHOP, FARMHOUSE, HOUSE AND COTTAGE, COMPLETE WITH AUTOMATIC CONTROLS AND REMOTE WEB/ICLOUD MONITORING, LOCATED, GLENFARG, PERTH, SCOTLAND

